



---

**JARD Set Trigger Assembly for  
700 Clone Actions**

---

*Operator's Instruction Manual*



3149 Nest Ave. – Sheldon, IA 51201  
Phone: 712-324-7409  
Email: [support@jardinc.com](mailto:support@jardinc.com) – [www.jardinc.com](http://www.jardinc.com)

## **WARNING**

This firearm is intended for use only by experienced competitive shooters and professionals. You must take responsibility for your own actions. We will not be responsible for any loss, injury, or death resulting from the use or misuse of this product.

The handling and use of firearm bears with a certain unavoidable risks, like sky diving and rock climbing. If you are not willing to accept responsibility for your own actions, guns are not for you.

The use of any custom parts or modifications may void any warranty from the manufacturer of your firearm.

Returns will not be accepted on any parts that have been modified.

If you do not have a thorough understanding of the Trigger Assembly and the purpose and function of all the parts, do not attempt to install this system. Have it installed by an experienced gunsmith.

### **Installation Procedure**

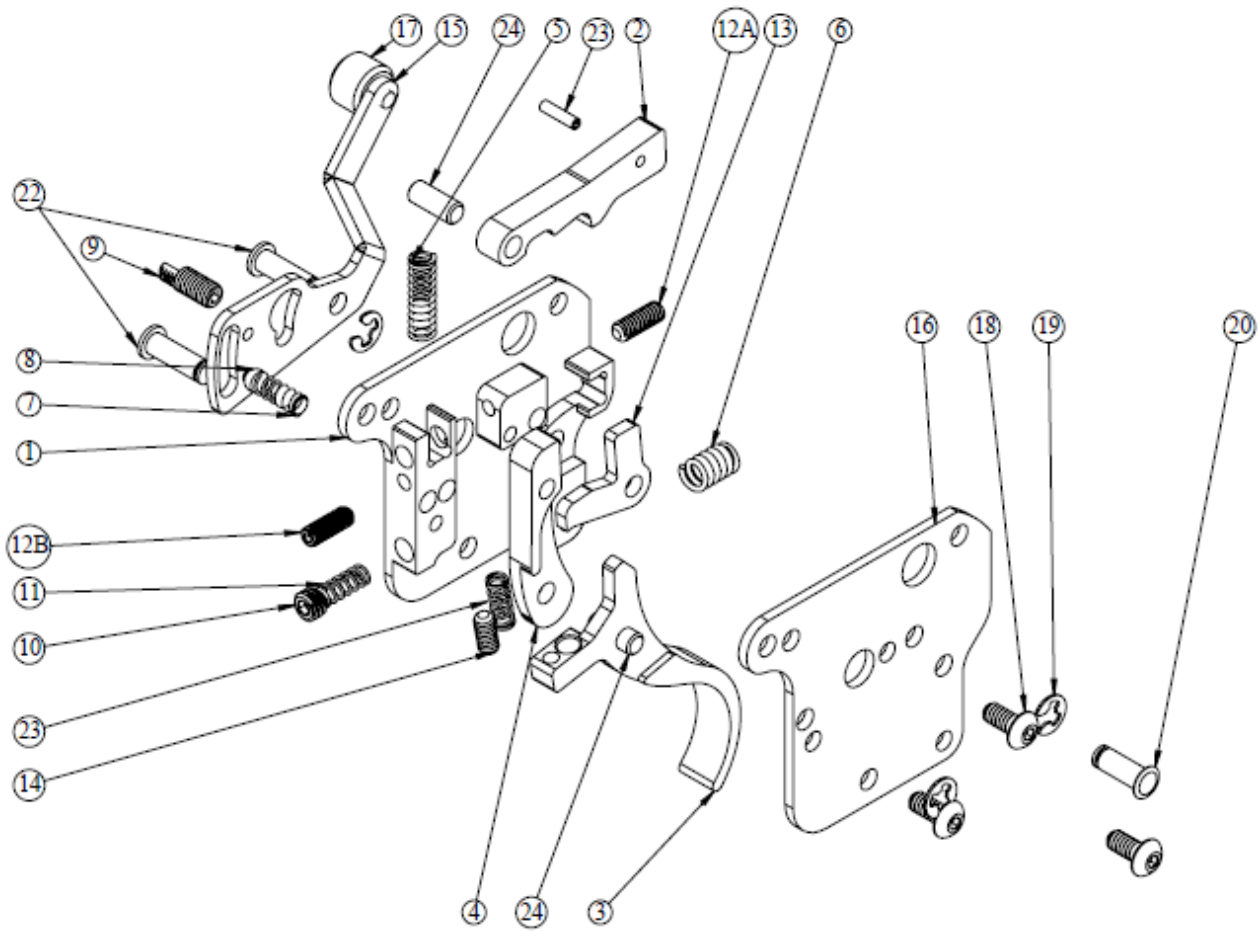
1. With the rifle pointed in a safe direction, check to make sure gun is unloaded.
2. Remove the bolt from the receiver and the receiver from the stock.
3. Remove the Factory trigger housing (with bolt stop lever and spring) from the receiver with a punch.
4. Install the JARD trigger in the receiver
5. The trigger and sear should pivot easily and do not bind. If they do bind, refer to the trigger adjustment instructions.
6. Place the bolt back into the receiver and make sure the bolt stays cocked. If it doesn't, back out the sear engagement (12a) and over-travel (12b) screws until the bolt will remain cocked.
7. Install the receiver back into the stock and check the function of the safety and bolt release if installed. Also perform safety checks. If any screws turn easily with no resistance, remove them completely, clean, and apply blue thread locker. Allow thread locker to dry 24 hours before using the firearm.

### **YOUR JARD TRIGGER SYSTEM COMES SET FROM THE FACTORY, NO ADJUSTMENT NEEDED.**

If you must make adjustments, follow these instructions carefully. Only adjust the trigger if you fully understand the adjustment process. Adjustments done incorrectly can make your firearm unsafe!

1. To adjust the sear engagement, cock the bolt and with a 0.050" hex key, turn the sear engagement screw (12a) clockwise until the sear is released. Now turn the screw back counter clockwise until a safe amount of sear engagement is achieved, approximately ¼ turn.
2. The over-travel screw (12b) can now be adjusted. With the action cocked, turn this screw into the point where pulling the trigger will not release the sear; then while pulling back on the trigger, turn the screw counter clockwise slowly until the sear is released. It should then be turned slightly further so there is ample clearance between the sear and trigger when the trigger is pulled. If there is no clearance, the sear may not always be released cleanly when pulling the trigger.
3. Check the functioning of the trigger by slamming the bolt home (closing it sharply) several times. If the sear is released during this, then sear engagement must be increased and/ or the weight of pull increased.
4. Adjust the offset safety screw (9) with a 1/16" hex key so that there is NO trigger movement when the safety is on and the bolt is cocked. (Note: There must be sufficient sear engagement to allow reliable safety function.)
5. The pull weight may be adjusted slightly by adjusting the spring tension screw (10). To lighten the pull, turn the screw counterclockwise with a 5/64" hex key. To increase the pull weight, turn the screw clockwise.
6. The set weight may also be adjusted. With the trigger pushed in set mode, turn the set adjustment screw (14) clockwise with a 0.050" hex key until the trigger is released. Turn the screw back counterclockwise until the desired set weight is achieved.

# JARD Set Trigger Assembly for 700 Clone Actions Parts Breakdown



ITEM NO.	PART NO.	DESCRIPTION	QTY.
1	3513	Trigger Housing	1
2	3507	Sear	1
3	3509 5232	Trigger Curved Straight	1
4	3508	Lever	1
5	1279	Spring	1
6	1016	Set Spring	1
7	1059	Spring	1
8	1163	.125 Ball	1
9	1444	Safety Screw	1
10	2952	Spring Adj. Screw	1
11	1058 1060 1062	Trigger Spring 2# 2 1/2# 3#	1

12	2970	(A) Sear Adj. (B) Overtravel Adj.	2
13	3510	Set Lever	1
14	1390	Set Adj. Screw	1
15	3511	Safety Lever	1
16	3515	Side Plate	1
17	1231	Knurled Safety Knob	1
18	2736	Screw	3
19	1254	E-Clip	3
20	5052	Retaining Pin	1
21	1058	Set Return Spring	1
22	3537	Retaining Pin	2
23	2543	Roll Pin	1
24	3159	Dowel Pin	2

## JARD, Inc.

3149 Nest Ave. – Sheldon, IA 51201

Phone: 712-324-7409 – Email: support@jardinc.com

www.jardinc.com