



JARD Single Stage Trigger Assembly for Bergara B-14

Operator's Instruction Manual



3149 Nest Ave. – Sheldon, IA 51201
Phone: 712-324-7409
Email: support@jardinc.com – www.jardinc.com

WARNING

This firearm is intended for use only by experienced competitive shooters and professionals. You must take responsibility for your own actions. We will not be responsible for any loss, injury, or death resulting from the use or misuse of this product.

The handling and use of firearm bears with a certain unavoidable risks, like sky diving and rock climbing. If you are not willing to accept responsibility for your own actions, guns are not for you.

The use of any custom parts or modifications may void any warranty from the manufacturer of your firearm.

Returns will not be accepted on any parts that have been modified.

If you do not have a thorough understanding of this trigger and the purpose and function of all the parts, do not attempt to install this system. Have it installed by an experienced gunsmith.

Installation Procedure

1. Visually inspect the chamber and magazine to make sure the rifle is unloaded.
2. Remove the bolt from the receiver and the receiver from the stock.
3. Using a punch, remove the Factory trigger housing from the receiver. (Bolt stop lever and spring will be removed when performing this step.)
4. Install the JARD trigger into the receiver (Typically, placing the tapered end into the hole first and installing the front pin first works best.)
5. Make sure the trigger and sear both pivot easily and do not bind. (If bound, refer to the trigger adjustment instructions)
6. Place the bolt back into the receiver and make sure the bolt is cocked. If the bolt is not cocked, back out the sear engagement (12) and over-travel (22) screws until the bolt will remain cocked.
7. Install the receiver back into the stock and check the function of the safety. If any screws turn easily with no resistance, remove them completely, clean, and apply blue thread locker. Allow thread locker to dry 24 hours before using the firearm.

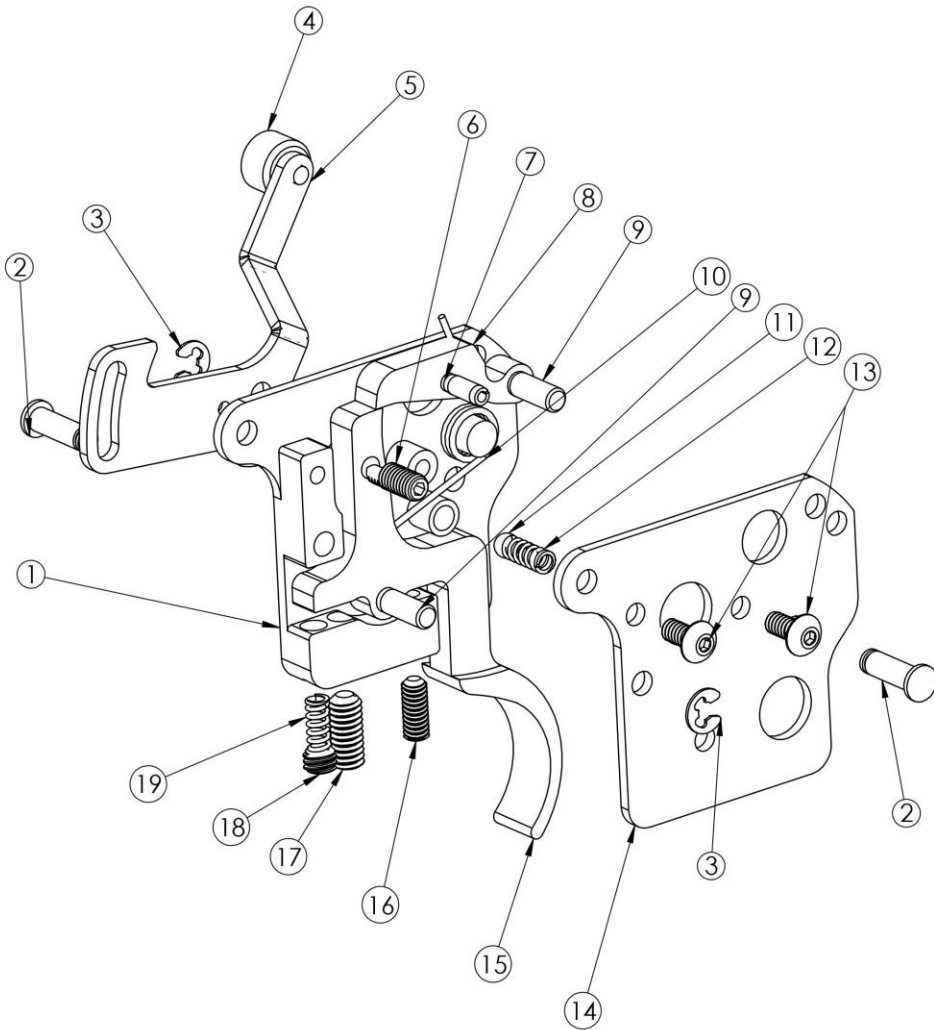
YOUR JARD TRIGGER SYSTEM COMES SET FROM THE FACTORY, NO ADJUSTMENT NEEDED.

If you must make adjustments, follow these instructions carefully. Only adjust the trigger if you fully understand the adjustment process. Adjustments done incorrectly can make your firearm unsafe!

1. The sear engagement screw (16) may be adjusted with the bolt cocked. With a 1/16" hex key, turn the screw clockwise until the sear is released. Now turn the screw back counter clockwise until a safe amount of sear engagement is achieved, approximately ¼ turn.
2. The over-travel screw (17) can now be adjusted. With the action cocked, turn this screw with a 5/64" hex key to the point where pulling the trigger will not release the sear; then while pulling back on the trigger, turn the screw counter clockwise slowly until the sear is released. It should then be turned slightly further so there is enough clearance between the sear and trigger when the trigger is pulled. If there isn't enough clearance, the sear may not release cleanly when pulling the trigger.
3. Check the functioning of the trigger by slamming the bolt home (closing it sharply) several times. If the sear is released during this, then sear engagement must be increased and/ or the weight of pull increased.
4. Adjust the offset safety screw (6) with a 1/16" hex key so that there is NO trigger movement when the safety is on and the bolt cocked. (Note: There must be sufficient sear engagement to allow reliable safety function.)
5. The pull weight may be adjusted slightly by adjusting the spring tension screw (18) with a 5/64" hex key. To lighten the pull, turn the screw counterclockwise.

JARD Single Stage Trigger Assembly for Bergara B-14

Parts Breakdown



ITEM NO.	PART NO.	DESCRIPTION	QTY.
1	4131	Trigger Housing	1
2	3537	Retaining Pin	2
3	1254	E-Clip	2
4	1231	Knurled Safety Knob	1
5	4135	Safety Plate	1
6	1444	Safety Screw	1
7	3915	Roll Pin	1
8	4134 4319	Sear S L	1
9	3159	Dowel Pin	2
10	1597	Sear Spring	1
11	1163	.125 Ball	1
12	1060	Spring	1
13	2736	Screw	2
14	4132	Side Plate	1
15	4133 4318	Trigger S L	1
16	1287	Sear Adj. Screw	1
17	4091	Overtravel Screw	1
18	2952	Spring Adj. Screw	1
19	1616 1058 1059 1060 1061 1062 4116	Trigger Pull Spring (L) 9oz (L) 11oz (L) 12oz (L) 14oz (L) 18oz / (S) 32oz (L) 24oz / (S) 40oz (S) 48oz	1

JARD, Inc.

3149 Nest Ave. – Sheldon, IA 51201

Phone: 712-324-7409 – Email: support@jardinc.com

www.jardinc.com