



JARD Trigger System for Browning A-Bolt

Operator's Instruction Manual



3149 Nest Ave. – Sheldon, IA 51201
Phone: 712-324-7409
Email: support@jardinc.com – www.jardinc.com

WARNING

This firearm is intended for use only by experienced competitive shooters and professionals. You must take responsibility for your own actions. We will not be responsible for any loss, injury, or death resulting from the use or misuse of this product.

The handling and use of firearm bears with a certain unavoidable risks, like sky diving and rock climbing. If you are not willing to accept responsibility for your own actions, guns are not for you.

The use of any custom parts or modifications may void any warranty from the manufacturer of your firearm.

Returns will not be accepted on any parts that have been modified.

If you do not have a thorough understanding of the A-Bolt Trigger Assembly and the purpose and function of all the parts, do not attempt to install this system. Have it installed by an experienced gunsmith.

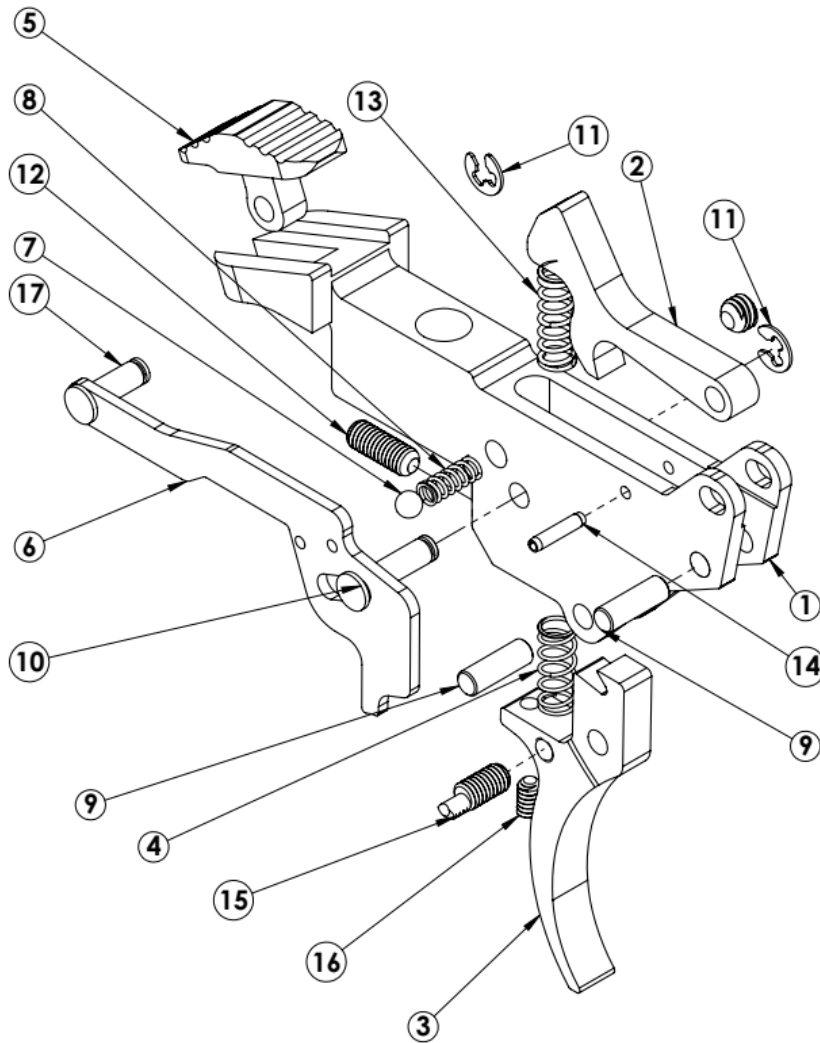
JARD Trigger System for Browning A-Bolt

YOUR JARD TRIGGER SYSTEM COMES SET FROM THE FACTORY, NO ADJUSTMENT NEEDED.

If you must make adjustments, follow these instructions carefully. Only adjust the trigger if you fully understand the adjustment process. Adjustments done incorrectly can make your firearm unsafe!

1. Verify the gun is unloaded, and remove the stock from the receiver.
2. To adjust the overtravel screw (16), with the action cocked, turn this screw in with a 0.050" hex key until it contacts the trigger housing, so pulling on the trigger will not release the sear. Then, while pulling back on the trigger, turn the screw counterclockwise slowly until the sear is released; it should then be turned farther, ever so slightly, so there is ample clearance between the sear and trigger when the trigger is pulled. If there is no clearance, the sear may not always be released clearly when pulling the trigger.
3. The sear engagement screw (12) may now be adjusted. Using a 1/16" hex key, turn the screw counterclockwise several turns and close the bolt leaving the action cocked, then slowly turn this screw in until the sear is released. Now the screw must be backed off (counterclockwise) until safe sear engagement can be achieved.
4. Check the functioning of the trigger by slamming the bolt home (closing it sharply) several times. If the sear is not released when closing sharply, then it may be possible to adjust for less sear engagement, but if the sear is released it must be backed off further, and/or the weight of pull increased.
5. With a 1/16" hex key, adjust the offset safety screw (15) so there is NO trigger movement when the safety is on and the bolt is cocked. (Note: There must be sufficient sear engagement to allow reliable safety function.)
6. Install the receiver back into the stock and perform function and safety checks.

JARD Trigger System for Browning A-Bolt Parts Breakdown List



ITEM NO.	PART NO.	DESCRIPTION	QTY.
1	2913	Trigger Housing	1
2	2914	Sear	1
3	2915	Trigger	1
4	1011 1013 1014 1016 1017	Trigger Spring 1# 1-1/2# 2# 2-1/2# 3#	1
5	1436	Safety Button	1
6	2916	Safety Plate	1
7	1163	.125 Ball	1
8	1060	Spring	1
9	1238	Dowel Pin	2
10	1452	Retaining Pin	1
11	1254	E-Clip	2
12	1148	Sear Adj. Screw	1
13	1114	Spring	1
14	1164	Roll Pin	1
15	1444	Safety Screw	1
16	3427	Overtravel Screw	1
17	3804	Retaining Pin	1
18	2952	Safety Spring Adj. Screw	1

JARD, Inc.

3149 Nest Ave. – Sheldon, IA 51201

Phone: 712-324-7409 – Email: support@jardinc.com

www.jardinc.com