



**JARD Sear Assembly for
IWI Tavor®**

Operators Instruction Manual



3149 Nest Ave. – Sheldon, IA 51201
Phone: 712-324-7409
Email: support@jardinc.com – www.jardinc.com

WARNING

This firearm is intended for use only by experienced competitive shooters and professionals. You must take responsibility for your own actions. We will not be responsible for any loss, injury, or death resulting from the use or misuse of this product.

The handling and use of firearm bears with a certain unavoidable risks, like sky diving and rock climbing. If you are not willing to accept responsibility for your own actions, firearms are not for you.

The use of any custom parts or modifications may void any warranty from the manufacturer of your firearm.

Returns will not be accepted if any components have been modified.

If you do not have a thorough understanding of the JARD Sear Assembly for IWI Tavor® and the purpose and function of all components, do not attempt to install this assembly. Have it installed by an experienced gunsmith.

JARD Sear Assembly for IWI Tavor®

Sear Assembly Installation Instructions

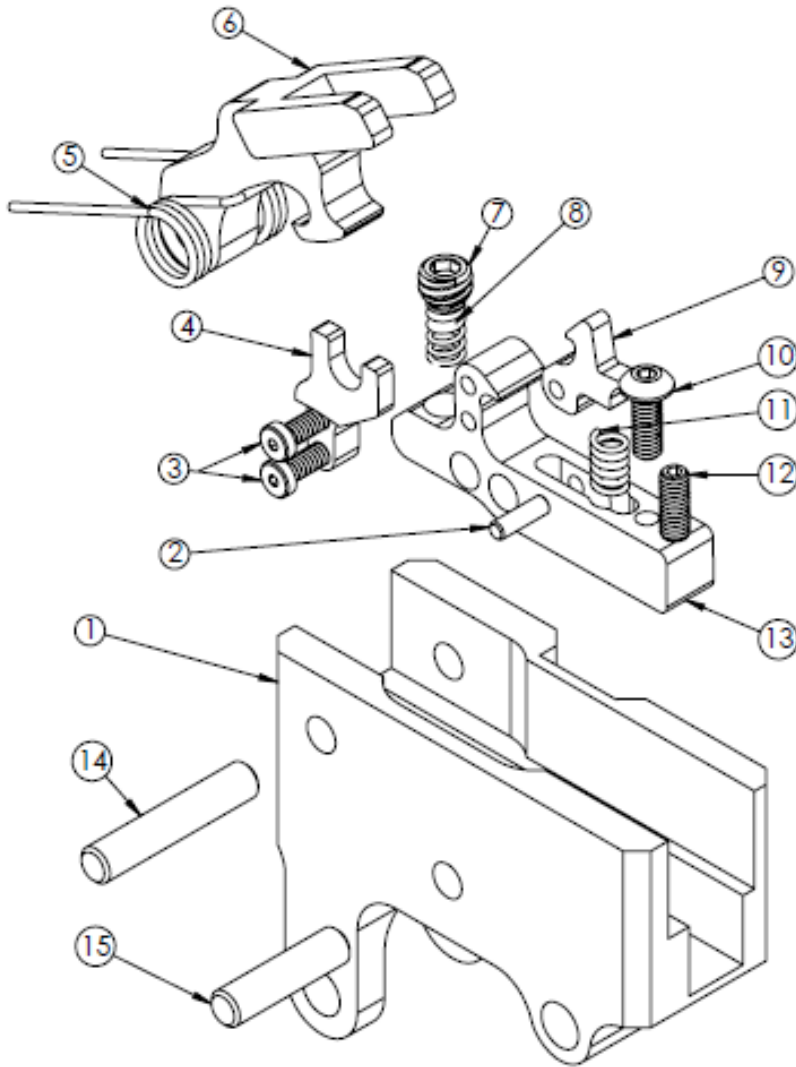
1. Remove the magazine and visually confirm that the chamber is empty before further handling of the rifle.
2. With the rifle upside down, push the bolt release retention pins through and flip the bolt release open to expose the factory sear assembly.
3. Note how the factory sear assembly is oriented, then remove it and replace it with the JARD sear assembly oriented in the same fashion.
4. Allow the bolt release to close back into place and secure it with the retention pins.
5. With the rifle still unloaded and pointed in a safe direction, perform function and safety checks.

YOUR JARD SEAR ASSEMBLY COMES SET FROM THE FACTORY, NO ADJUSTMENT NEEDED. If you must make adjustments, follow these instructions carefully. Each step must be done in sequence. Only adjust the sear assembly if you understand the adjustment process. Adjustments done incorrectly can make your firearm unsafe!

1. Unload and clear the rifle, then remove the sear assembly to adjust it.
2. Place the hammer in the cocked position. Then with a 1/16" hex key, turn the sear engagement screw (12) clockwise until the sear releases the hammer. From this point, back the screw counter-clockwise approx. 1 full turn to reach a safe level of sear engagement. **SAFETY WARNING:** Insufficient sear engagement can result in hammer follow or loss of trigger function, causing double fires or a "runaway gun."
3. With the hammer again in the cocked position, turn the disconnect screw (10) with a 5/64" hex key counter-clockwise until when pushing the hammer down, you can feel it brush against the hook of the disconnect as much as possible without hooking. If the hammer remains retained by the disconnect, turn the screw clockwise until the hammer is no longer bound by the disconnect.
4. With the hammer forward (Hold the hammer down and guide it forward to prevent damage. Push the lever beside the hammer forward to release the hammer.) the spring tension screw (7) can be adjusted with a 1/8" hex key. Turn clockwise to increase pull and counter-clockwise to decrease pull weight. If adjusted too tight or "heavy" the sear will not move, adjusted too loose or "light" the sear will not reset properly.

NOTE: If screws begin to turn too easily, apply thread locker to their threads to prevent deviation from adjustment. Allow 24 hours for thread locker to cure before use.

JARD Sear Assembly for IWI Tavor® Parts Breakdown List



ITEM NO.	PART NO.	DESCRIPTION	QTY.
1	5215	Sear Housing	1
2	1352	Dowel Pin	1
3	4099	Screw	2
4	5217	Sear Arm	1
5	1610	Hammer Spring	1
6	5216	Hammer	1
7	2868	Spring Tension Screw	1
8	1016	Sear Spring	1
9	4191	Disconnect	1
10	1805	Disconnect Screw	1
11	1017	Disconnect Spring	1
12	1148	Sear Screw	1
13	4620	Sear	1
14	3020	Dowel Pin	1
15	2747	Dowel Pin	1

JARD, Inc.

3149 Nest Ave. – Sheldon, IA 51201

Phone: 712-324-7409 – Email: support@jardinc.com

www.jardinc.com