



---

# Ruger Mini-14 / 30

---

*Operator's Instruction Manual*



3149 Nest Ave. - Sheldon, IA 51201  
Phone: 712-324-7409  
Email: [support@jardinc.com](mailto:support@jardinc.com) - [www.jardinc.com](http://www.jardinc.com)

## **WARNING**

This fire control system is intended for use only by experienced competitive shooters and professionals. You must take responsibility for your own actions. We will not be responsible for any loss, injury, or death resulting from the use or misuse of this product.

The handling and use of firearm bears with a certain unavoidable risks, like sky diving and rock climbing. If you are not willing to accept responsibility for your own actions, guns are not for you.

The use of any custom parts or modifications may void any warranty from the manufacturer of your firearm.

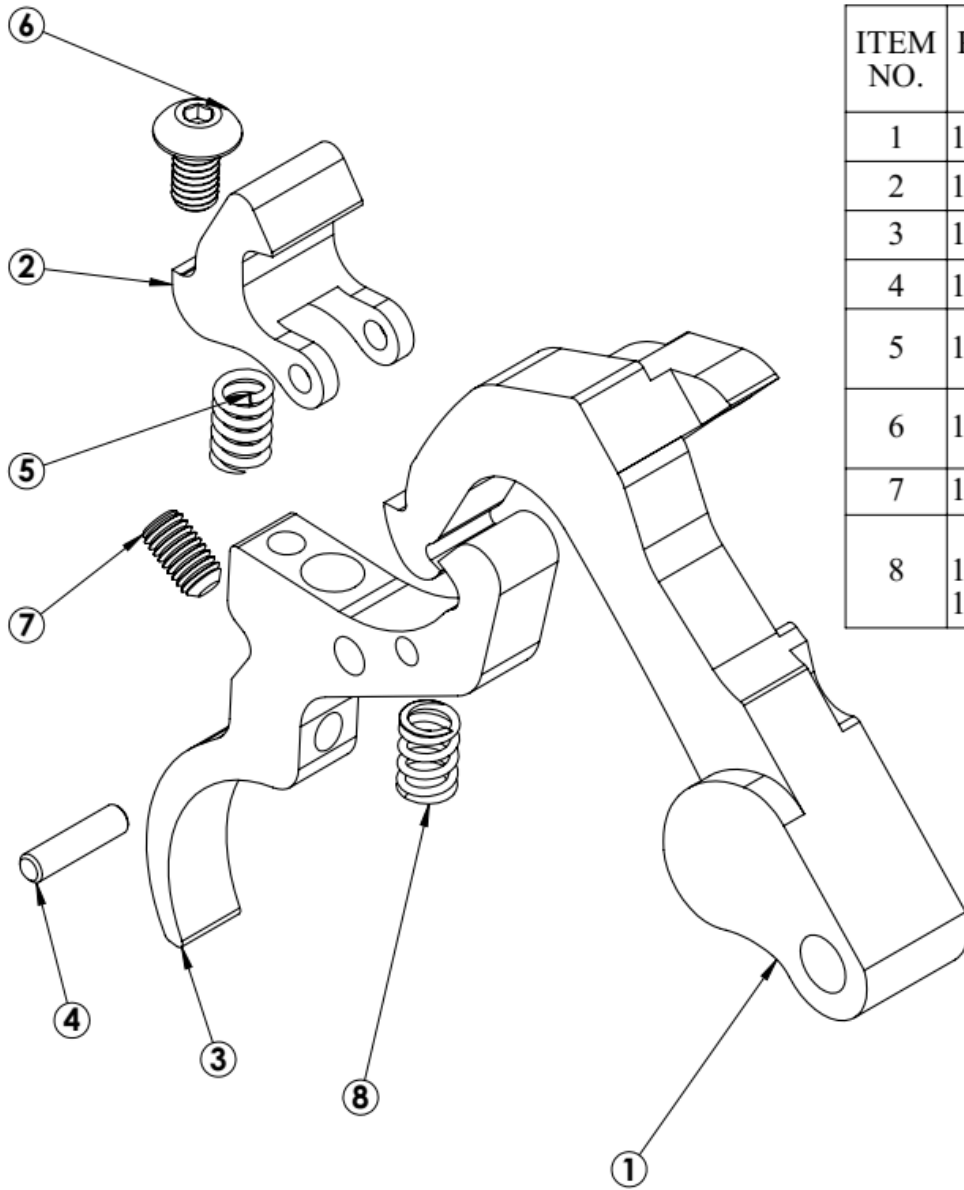
Returns will not be accepted on any parts that have been modified.

If you do not have a thorough understanding of the Ruger Mini-14 trigger system and the purpose and function of all the parts, do not attempt to install this system. Have it installed by an experienced gunsmith.

Read the instructions completely before beginning the installation procedure.

1. Remove the magazine and visually check chamber to make sure firearm is unloaded.
2. Pull the rear of the trigger guard back and down to unlatch the trigger assembly. Once unlatched, the trigger group can be removed from the rifle.
3. With the trigger group free, cock the hammer so the hammer spring is compressed. Place a small pin in the hammer strut hole. With the pin in place, pull the trigger so the hammer is free of the strut. The hammer strut with spring and pin can now be removed from the assembly.
4. Remove the hammer pivot pin along with the factory hammer.
5. Remove the trigger pivot pin along with the factory trigger, disconnect and springs.
6. Disassemble the JARD Replacement trigger. Clean threads of the disconnect (6) and sear (7) screws (5/64" hex key for the disconnect screw and 1/16" hex key for the sear screw). Apply blue thread locker to the threads and reassemble.

7. Hold the trigger assembly upside down and set the trigger return spring into the spring pocket on the bottom side of the trigger.
8. While holding the trigger assembly upside down, lower the housing onto the trigger in an upside down manner. (Instead of holding the components upside down, a dab of grease can be placed into the spring pocket to hold the spring.)
9. While holding the trigger assembly and housing together, align the holes and install the original trigger pivot pin.
10. Place the hammer and trigger guard to the housing, align holes and reinstall the original pin.
11. Place the hammer spring/spring guide into the assembly with the hammer up.
12. Cock the hammer to compress the hammer spring which will allow you to remove the pin you placed into the hole in the spring guide.
13. To set the sear engagement, place the hammer in the cocked position. With a 1/16" hex key, turn the sear engagement screw clockwise until the sear disconnects from the hammer. Now turn the screw counter-clockwise ½ turn to create a safe amount of sear engagement.
14. To set the disconnect engagement, cock the hammer and hold it all the way down while turning the disconnect screw counter-clockwise until you feel the hammer brush against the disconnect. Carefully continue adjusting while holding the hammer down until the hammer and disconnect have as much contact as possible without latching.
15. Reassemble the trigger group and receiver and stock. Perform all function and safety checks. Allow thread locker to dry 24 hours before use.



ITEM NO.	PART NO.	DESCRIPTION	QTY
1	1470	Hammer	1
2	1471	Disconnect	1
3	1469	Trigger	1
4	1166	Dowel Pin	1
5	1017	Disconnect Spring	1
6	1524	Disconnect Adj. Screw	1
7	1123	Sear Adj. Screw	1
8	1121 1015	Trigger Spring 1# 3#	1

**JARD, Inc.**

3149 Nest Ave. - Sheldon, IA 51201

Phone: 712-324-7409 - Email: support@jardinc.com

www.jardinc.com