



---

## **JARD Trigger System for Nosler Rifles**

---

*Operator's Instruction Manual*



3149 Nest Ave. – Sheldon, IA 51201  
Phone: 712-324-7409  
Email: [support@jardinc.com](mailto:support@jardinc.com) – [www.jardinc.com](http://www.jardinc.com)

## **WARNING**

This firearm is intended for use only by experienced competitive shooters and professionals. You must take responsibility for your own actions. We will not be responsible for any loss, injury, or death resulting from the use or misuse of this product.

The handling and use of firearm bears with a certain unavoidable risks, like sky diving and rock climbing. If you are not willing to accept responsibility for your own actions, guns are not for you.

The use of any custom parts or modifications may void any warranty from the manufacturer of your firearm.

### **JARD Trigger System for Nosler Rifles**

#### **Installation**

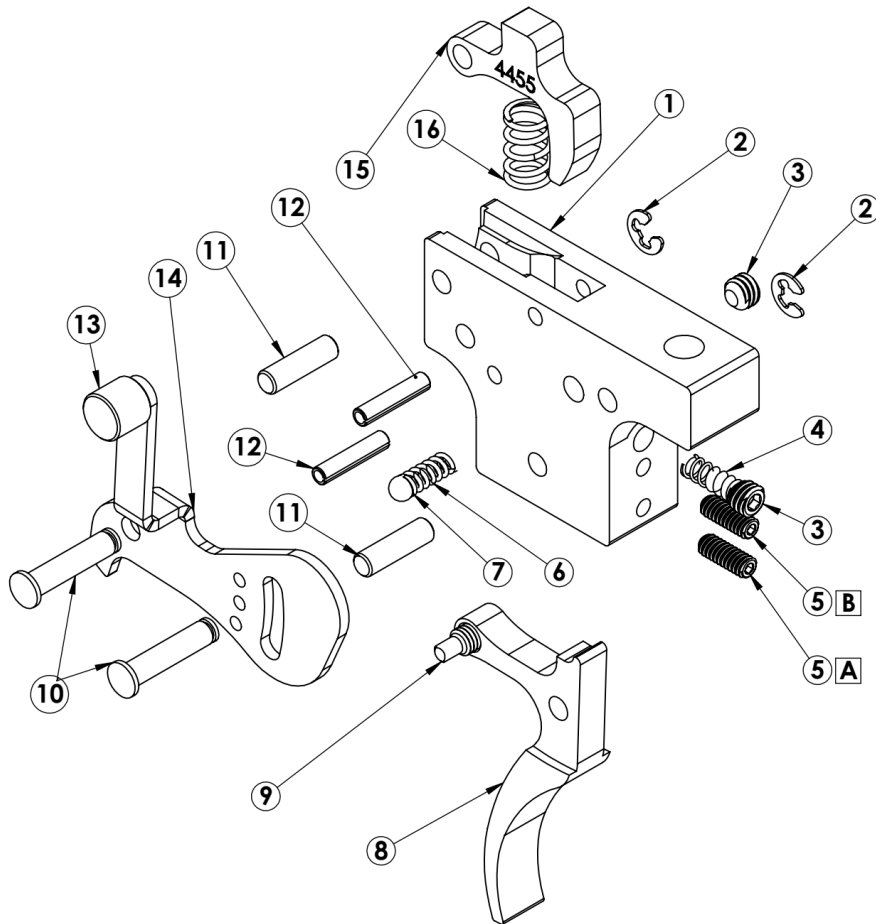
1. With the rifle pointed in a safe direction, open the bolt and visually check the chamber to verify it is unloaded before further handling of the rifle.
2. Remove the bolt from the action.
3. Remove the two disassembly screws and remove the stock from the action.
4. Remove the trigger assembly mounting screw and remove the factory trigger assembly.
5. Install the JARD replacement Trigger System.
6. Reassemble the rifle and perform a function and safety check.

#### **YOUR JARD TRIGGER SYSTEM COMES SET FROM THE FACTORY, NO ADJUSTMENT NEEDED.**

If you must make adjustments, follow these instructions carefully. Only adjust the trigger if you fully understand the adjustment process. Adjustments done incorrectly can make your firearm unsafe!

1. Open the bolt and visually check the chamber to verify it is not loaded.
2. Disassemble the stock from the action.
3. To adjust the sear engagement screw (5A), cock the action and with a 0.050" hex key, turn the screw clockwise slowly until the sear is released. From the point where the trigger releases the sear, turn the screw counterclockwise until there is sufficient sear engagement to function safely and properly. (Approximately ¼ turn).
4. To adjust the over travel (5B), decock the action. Turn the over travel screw clockwise with a 0.050" hex key until the screw stops. Next, open up the bolt as if cocking the rifle. The trigger should not reset. With the bolt open, turn the over travel screw counterclockwise until the sear resets. An additional ¼ turn counterclockwise is recommended for ample sear clearance to prevent binding.
5. To set the safety screw (9), make sure the action is cocked and the safety is on the safe position. Use a 1/16" hex key to turn the screw until it contacts the safety plate. The safety should be able to move freely. If the safety is set too loose, the trigger will fire on safe, and if it is set too tight the safety may not move easily or not able to engage.
6. Use a 5/64" hex key to adjust the pull weight, the spring tension screw (3, above 5B) may be turned in (clockwise) to increase the pull weight or, turned out (counterclockwise) to decrease pull weight.
7. If any of the adjusting screws move freely with no resistance, it will be necessary to remove the screw and apply blue thread locker to the threads to prevent settings from coming out of adjustment.
8. Perform all safety and function checks.

# JARD Trigger System for Nosler Parts Breakdown List



ITEM NO.	PART NUMBER	DESCRIPTION	QTY.
1	4454	Trigger Housing	1
2	1254	E-Clip	2
3	2952	Spring Adj. Screw	2
4	1616 1058 1059 1060 1061 1062 4116	Trigger Return Spring 6 oz 8 oz 10 oz 12 oz 16 oz 20 oz 32 oz	1
5	2970	(A) Sear Adj. Screw (B) Overtravel Adj. Screw	2
6	1062	Spring	1
7	1163	.125 Ball	1
8	4216	Trigger	1
9	1444	Safety Screw	1
10	1950	Retaining Pin	2
11	2152	Dowel Pin	2
12	2525	Roll Pin	2
13	1231	Safety Knob	1
14	4456	Safety Plate	1
15	4455	Sear	1
16	2918	Sear Spring	1

**JARD, Inc.**

3149 Nest Ave. – Sheldon, IA 51201

Phone: 712-324-7409 – Email: [support@jardinc.com](mailto:support@jardinc.com)

[www.jardinc.com](http://www.jardinc.com)