



JARD Trigger System for Remington 597

Operators Instruction Manual



3149 Nest Ave. – Sheldon, IA 51201
Phone: 712-324-7409
Email: support@jardinc.com – www.jardinc.com

WARNING

This firearm is intended for use only by experienced competitive shooters and professionals. You must take responsibility for your own actions. We will not be responsible for any loss, injury, or death resulting from the use or misuse of this product.

The handling and use of firearm bears with a certain unavoidable risks, like sky diving and rock climbing. If you are not willing to accept responsibility for your own actions, guns are not for you.

The use of any custom parts or modifications may void any warranty from the manufacturer of your firearm.

Returns will not be accepted on any parts that have been modified.

If you do not have a thorough understanding of the Remington 597 Trigger Assembly and the purpose and function of all the parts, do not attempt to install this system. Have it installed by an experienced gunsmith.

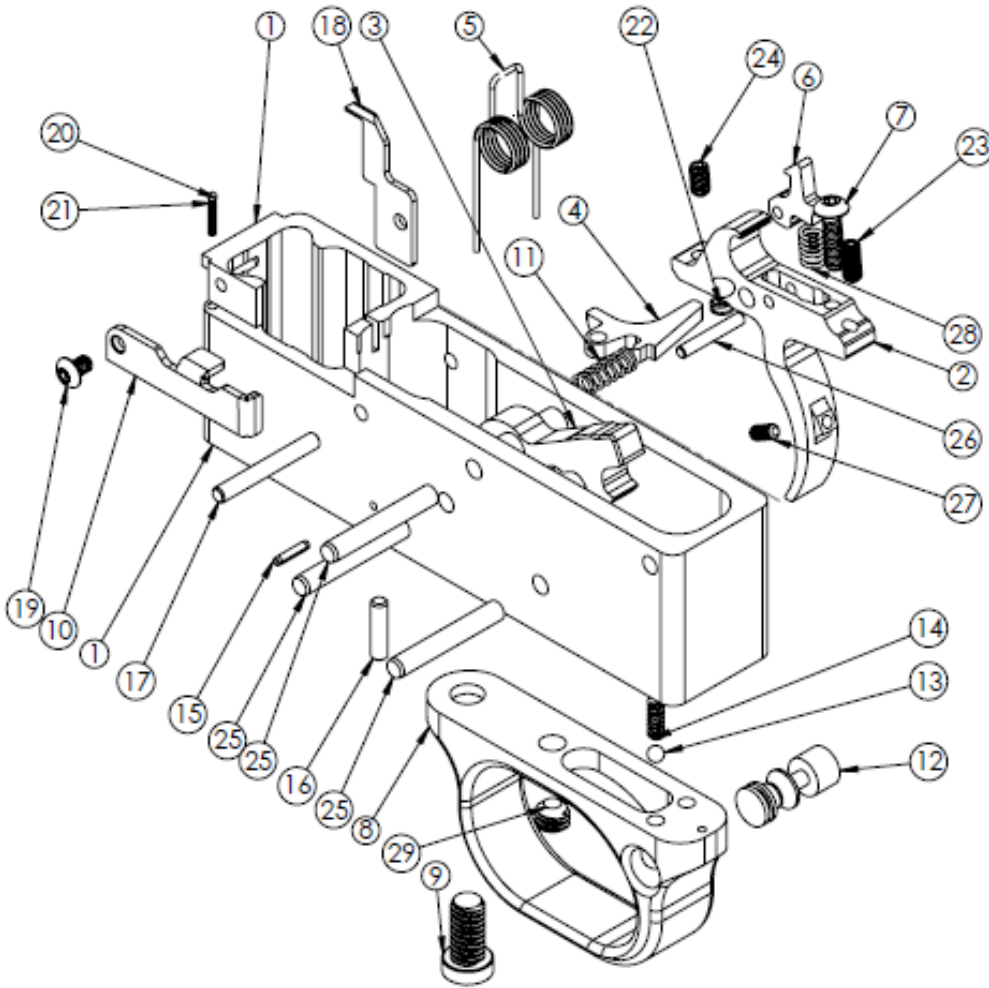
JARD Trigger System for Remington 597 & 597 Magnum

YOUR JARD TRIGGER SYSTEM COMES SET FROM THE FACTORY, NO ADJUSTMENT NEEDED.

If you must make adjustments, follow these instructions carefully. Only adjust the trigger if you fully understand the adjustment process. Adjustments done incorrectly can make your firearm unsafe!

1. Remove the magazine and visually check the chamber to check it is clear before further handling of the rifle.
2. Separate the stock from the receiver and remove trigger housing from receiver.
3. Adjust over-travel by turning the over travel screw (24) with a 1/16" hex key (the hammer will need to be removed to access this screw). There should be minimal over travel when properly adjusted.
4. Adjust the sear engagement screw (23) by turning screw clockwise with a 1/16" hex key (with the hammer cocked). Turn the screw clockwise until the sear releases the hammer, then turn the screw counter-clockwise until there is sufficient sear clearance to function safely and properly. (Whenever this screw is adjusted the disconnect and safety screws must be readjusted as well).
5. Adjust the disconnect screw (7) with a 5/64" hex key so that when the hammer is in the cocked position you can push down on the hammer and feel it brush against the hook of the disconnect as much as possible without hooking.
6. To set the safety screw (27), place the hammer in the cocked position. Place safety in the safe position. Turn the screw with a 0.050" hex key in the trigger shoe in until it contacts the safety button.
7. Perform all safety and function checks.
8. Reinstall all components.

JARD Trigger System for Remington 597 & 597 Magnum Parts Breakdown List



ITEM NO.	PART NO.	DESCRIPTION	QTY.
1	1506 1607	Trigger Housing 597 Standard 597 Magnum	1
2	1165	Trigger	1
3	1612	Hammer	1
4	1501	Mag Latch	1
5	1010	Hammer Spring	1
6	1167	Disconnect	1
7	1187	Disconnect Screw	1
8	1161	Trigger Guard	1
9	1159 1609	Screw 597 Standard 597 Magnum	1
10	1500 1608	Bolt Hold Open 597 597 Magnum	1
11	1113	Spring	1
12	1162	Safety	1
13	1163	.125 Ball	1
14	1060	Spring	1
15	1164	Roll Pin	1
16	1505	Dowel Pin	1
17	1504	Dowel Pin	1
18	1502	Ejector Blade	1
19	4084	Screw	1
20	2581	.063 Ball	1
21	1851	Spring	1
22	1011 1013 1014 1016 1017	Trigger Spring 1# 1-1/2# 2# 2-1/2# 3#	1
23	1155	Sear Screw	1
24	1123	Overtravel Screw	1
25	1503	Dowel Pin	3
26	1009	Dowel Pin	1
27	1390	Safety Screw	1
28	1017	Spring	1
29	2868	Spring Tension Screw	1

JARD, Inc.

3149 Nest Ave. – Sheldon, IA 51201

Phone: 712-324-7409 – Email: support@jardinc.com

www.jardinc.com