



JARD Trigger System for Savage A17WSM

Operator's Instruction Manual



3149 Nest Ave. – Sheldon, IA 51201
Phone: 712-324-7409
Email: support@jardinc.com – www.jardinc.com

WARNING

Firearms are intended for use only by experienced competitive shooters and professionals. You must take responsibility for your own actions. We will not be responsible for any loss, injury, or death resulting from the use or misuse of this product.

The handling and use of firearm bears with a certain unavoidable risks, like sky diving and rock climbing. If you are not willing to accept responsibility for your own actions, guns are not for you.

The use of any custom parts or modifications may void any warranty from the manufacturer of your firearm. Returns will not be accepted on any parts that have been modified.

If you do not have a thorough understanding of this trigger and the purpose and function of all the parts, do not attempt to install this system. Have it installed by an experienced gunsmith.

Installation

1. Remove the magazine and visually check the chamber to verify the rifle is not loaded.
2. Remove the dust cover on the rear of the receiver. (Use a small object to depress the retainer at the rear of the dust cover and pull up at the rear.)
3. Unscrew the disassembly screw at the rear of the receiver and the disassembly screw on the bottom of the rifle, just ahead of the magazine well and remove the action from the stock.
4. Remove the guide rod / recoil spring assembly.
5. Remove the trigger retaining cross pin visible from the side of the action at the rear of the receiver. The factory trigger assembly will now be able to be slid forward toward the muzzle and then pulled away from the receiver.
6. Install the JARD Trigger System and reassemble the rifle in the reverse order of removal/disassembly. (Note: The back of the trigger must be installed first at an angle.) Once assembled, perform function and safety checks.

YOUR JARD TRIGGER SYSTEM COMES SET FROM THE FACTORY, NO ADJUSTMENT NEEDED.

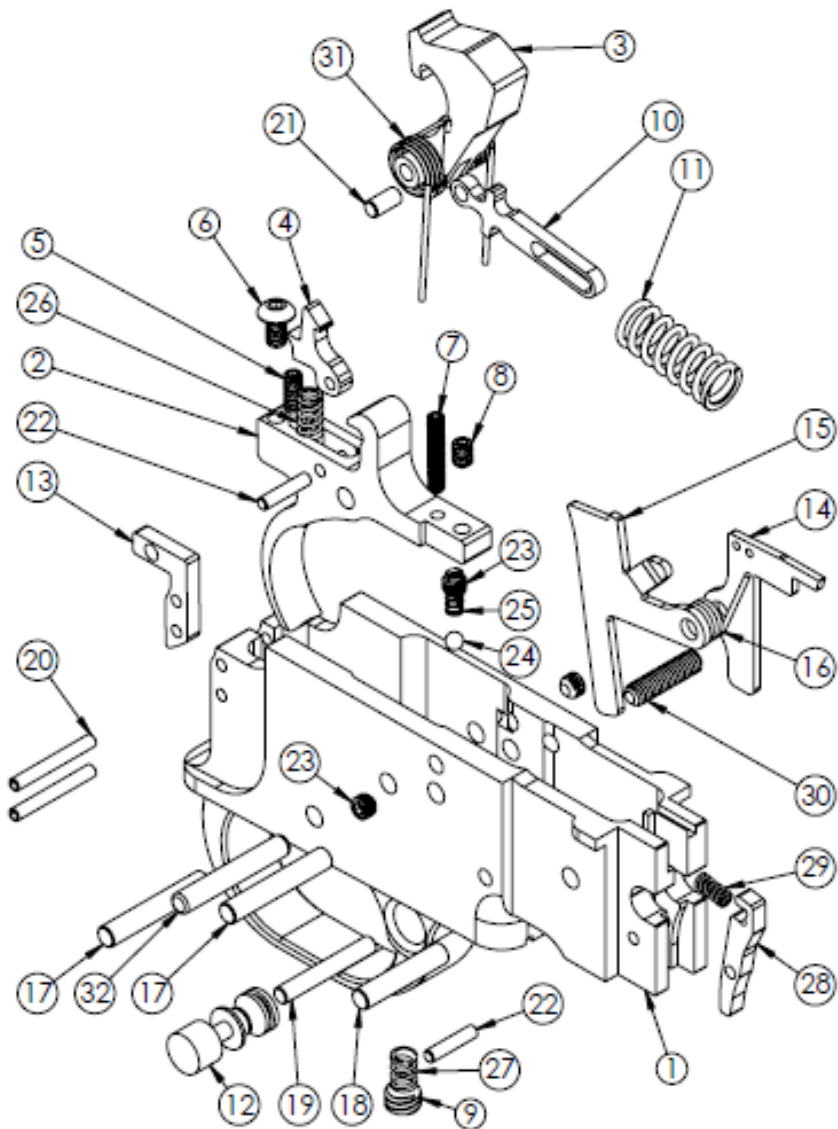
If you must make adjustments, follow these instructions carefully. Only adjust the trigger if you fully understand the adjustment process. Adjustments done incorrectly can make your firearm unsafe!

1. Remove the magazine and visually check the chamber to verify the rifle is not loaded.
2. Remove the receiver from the stock and remove the JARD trigger system from the receiver.
3. To adjust the sear engagement, first cock the hammer and switch the safety off. Then use a 1/16" hex key to turn the sear engagement screw (5) clockwise slowly until the hammer is released. From this point, turn the screw counterclockwise approximately 1 to 1-1/2 turns for sufficient sear engagement to function safely and properly.
4. To adjust the disconnect engagement, first cock the hammer and keep the safety off. Then, while pushing the hammer all the way down, use a 5/64" hex key to turn the disconnect adjustment screw (6) counter-clockwise until the hammer brushes against the disconnect without hooking. If the hammer sticks, the disconnect screw must be turned clockwise until the hammer is released.
5. To adjust the over travel, the hammer pivot pin (17 – Hammer Pivot) must first be driven out to move the hammer forward so it is out of the way. Once the hammer is out of the way, use a 5/64" hex key to adjust the over-travel screw (6). Turn it clockwise to decrease over travel and counter-clockwise to increase over travel. If the over travel screw is adjusted too clockwise, the hammer will not release from the trigger when it is pulled. If you are going to change the safety engagement, move to step 6, otherwise reinstall the hammer pivot pin and check trigger functionality.

6. To set the safety engagement, the hammer pivot pin (17 –Hammer Pivot) must first be driven out to move the hammer forward so it is out of the way. Once the hammer is out of the way, place the safety in the safe position. Use a 0.050" hex key to turn the safety screw (7) clockwise until it contacts the safety then back it off until the safety moves freely. If the safety is set too loose, the trigger will fire on safe. If it is set too tight the safety may not move freely or not be able to engage properly.
7. To adjust the pull weight, use a 1/8" hex key to turn the spring tension screw (9) clockwise to increase the pull weight or counter-clockwise to decrease pull weight. (Note: pull weight can only be slightly adjusted. If you want to reach a different pull weight, you can purchase a replacement trigger spring (27) from JARD. Do NOT trim your trigger spring.)
8. If the trigger housing is overly loose in the receiver, the side screws (23) may be adjusted out with a 5/64" hex key to create a tighter fit.
9. If any of the adjusting screws move freely without resistance, they must be removed and have blue thread locker applied to the threads to prevent settings from coming out of adjustment.
10. Reassemble the rifle and perform all safety and function checks.

JARD Trigger System for Savage A17WSM

Parts Breakdown List



ITEM NO.	PART NO.	DESCRIPTION	QTY.
1	5546	Trigger Housing	1
2	4372	Trigger	1
3	5545	Hammer	1
4	1167	Disconnect	1
5	1475	Sear Screw	1
6	1524	Disconnect Adj. Screw	1
7	3084	Safety Screw	1
8	1124	Overtravel Screw	1
9	2868	Spring Tension Screw	1
10	4212	Hammer Strut	1
11	4545	Hammer Spring	1
12	1162	Safety	1
13	4375	Trigger Housing Mount	1
14	5544	Ejector, 17WSM	1
15	4376	Bolt Hold	1
16	4370	Sear Spring	1
17	1171	Dowel Pin	2
18	1168	Dowel Pin	1
19	2752	Dowel Pin	1
20	2517	Roll Pin	2
21	1856	Dowel Pin	1
22	3069	Dowel Pin	2
23	2952	Set Screw	3
24	1163	.125 Ball	1
25	1059	Safety Spring	1
26	1016	Spring	1
27	1011 1012 1013 1014 1016	Trigger Spring 1# 1-1/2# 2# 2 1/2# 3#	1
28	4652	Magazine Pressure Plate	1
29	4486	Spring	1
30	5138	Set Screw	1
31	1010	Hammer Spring	1
32	5585	Dowel Pin	1

JARD, Inc.

3149 Nest Ave. – Sheldon, IA 51201

Phone: 712-324-7409 – Email: support@jardinc.com

www.jardinc.com