



JARD Trigger System for Savage Axis

Operator's Instruction Manual



3149 Nest Ave. – Sheldon, IA 51201
Phone: 712-324-7409
Email: support@jardinc.com – www.jardinc.com

WARNING

This firearm is intended for use only by experienced competitive shooters and professionals. You must take responsibility for your own actions. We will not be responsible for any loss, injury, or death resulting from the use or misuse of this product.

The handling and use of firearm bears with a certain unavoidable risks, like sky diving and rock climbing. If you are not willing to accept responsibility for your own actions, guns are not for you.

The use of any custom parts or modifications may void any warranty from the manufacturer of your firearm.

Returns will not be accepted on any parts that have been modified.

If you do not have a thorough understanding of the Savage Axis Trigger Assembly and the purpose and function of all the parts, do not attempt to install this system. Have it installed by an experienced gunsmith.

Installation

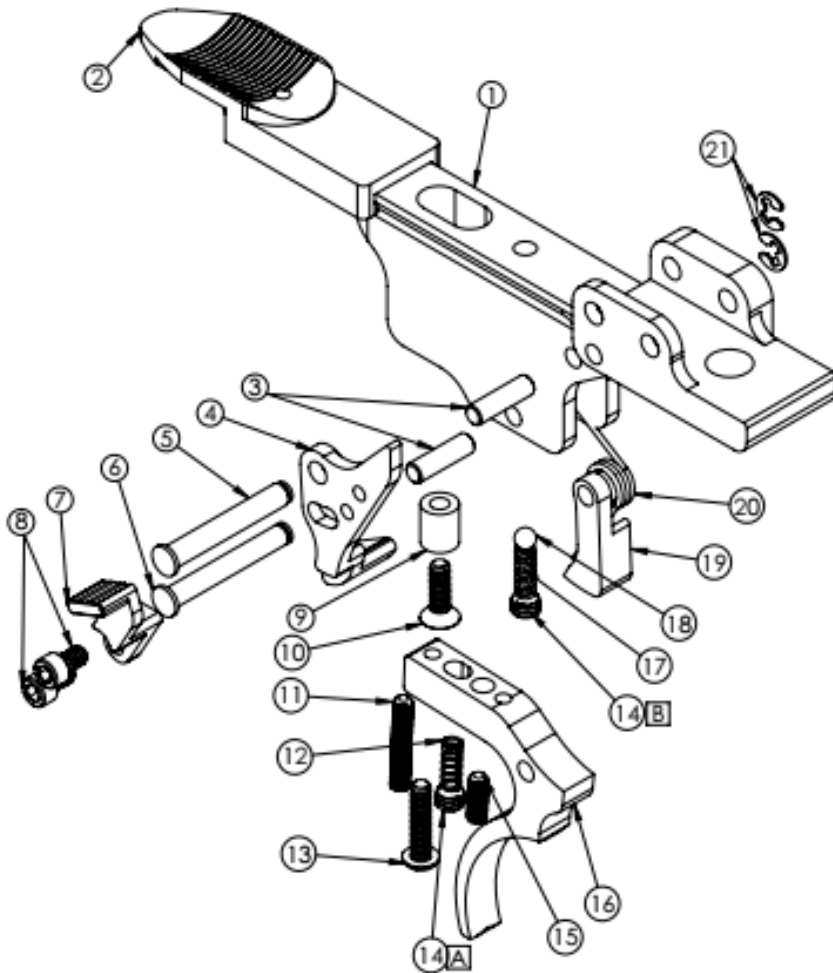
1. Drop the magazine and visually inspect the chamber to verify the rifle is clear
2. Separate the receiver from the stock
3. Remove the mounting pin attaching the trigger housing to the receiver (front pin) and remove the factory trigger
4. Install the JARD trigger system and secure it with the mounting pin
5. Reinstall the receiver in the stock and perform function and safety checks

YOUR JARD TRIGGER SYSTEM COMES SET FROM THE FACTORY, NO ADJUSTMENT NEEDED.

If you must make adjustments, follow these instructions carefully. Only adjust the trigger if you fully understand the adjustment process. Adjustments done incorrectly can make your firearm unsafe!

1. Visually inspect the chamber to verify the rifle is clear and safe to handle.
2. To adjust the sear engagement, use a 1/16" hex key to turn the sear adjustment screw (13) counter-clockwise several turns, then close the bolt to cock the action and turn the safety selector to the fire position. Slowly turn the screw clockwise until the sear is released. From this point, turn the screw counter-clockwise 1/4 turn. This ensures sufficient sear engagement that also provides reliable safety function.
3. Check functioning of the trigger by slamming the bolt (closing it sharply) several times. If the sear does not release when closing sharply, it may be possible to further reduce sear engagement. However, if the sear does release as a result of slamming the bolt, sear engagement and/or pull weight must be increased.
4. Once the sear engagement has been successfully set, the safety can be adjusted. With the action cocked, push the safety selector to the safe position. If the safety cannot be engaged, the safety screw (11) must be turned counterclockwise with a 0.050" hex key to allow the safety to move back. Once the safety is in the on position, turn the safety screw clockwise until it contacts the safety. There should be no movement in the trigger with the safety on and the safety should be able to move back and forth freely.
5. To adjust the over-travel, pull the trigger so the striker is forward. Then, using a 0.050" hex key, turn the over-travel screw (15) clockwise until the screw stops. Next, pull the bolt back but do not close it. Turn the screw counterclockwise until the trigger resets. The over-travel screw may need to be adjusted slightly further counterclockwise to prevent binding or failure to reset.
6. Finally, the pull weight can be adjusted slightly. Use a 5/64" hex key to adjust the spring tension screw (14A). Turn the screw clockwise to increase pull weight or counter-clockwise to decrease pull weight.
7. Reinstall the receiver to the stock and perform function and safety checks.

JARD Trigger System for Savage Axis Parts Breakdown List



ITEM NO.	PART NUMBER	DESCRIPTION	QTY.
1	4678	Trigger Housing	1
2	4679	Safety	1
3	2152	Dowel Pin	2
4	4559	Sear	1
5	4682	Retaining Pin, Savage	1
6	3352	Retaining Pin	1
7	4681	Bolt Release	1
8	3433	Screw	2
9	4680	Safety Bushing	1
10	2326	Screw	1
11	3084	Safety Screw	1
12	1616 1058 1059 1060	Trigger Pull Spring 11 oz 14 oz 16 oz 20 oz	1
13	5229	Sear Adjust Screw	1
14	2952	(A) - Pull Spring Adj. (B) - Safety Spring Adj.	2
15	2970	Overtravel Adj. Screw	1
16	4557	Trigger	1
17	1060	Spring	1
18	1163	.125 Ball	1
19	4558	Lever	1
20	1597	Sear Spring	1
21	1254	E-Clip	2

JARD, Inc.

3149 Nest Ave. – Sheldon, IA 51201

Phone: 712-324-7409 – Email: support@jardinc.com

www.jardinc.com