



**JARD Sear Assembly for
Springfield Hellion®**

Operators Instruction Manual



3149 Nest Ave. – Sheldon, IA 51201
Phone: 712-324-7409
Email: support@jardinc.com – www.jardinc.com

WARNING

This firearm is intended for use only by experienced competitive shooters and professionals. You must take responsibility for your own actions. We will not be responsible for any loss, injury, or death resulting from the use or misuse of this product.

The handling and use of firearm bears with a certain unavoidable risks, like sky diving and rock climbing. If you are not willing to accept responsibility for your own actions, firearms are not for you.

The use of any custom parts or modifications may void any warranty from the manufacturer of your firearm.

Returns will not be accepted if any components have been modified.

If you do not have a thorough understanding of the JARD sear assembly and the purpose and function of all components, do not attempt to install this assembly. Have it installed by an experienced gunsmith.

JARD Sear Assembly for Springfield Hellion®

Sear Assembly Installation Instructions

1. Remove the magazine and visually confirm that the chamber is empty before further handling of the rifle.
2. Push the rear takedown retention pin through and remove the stock / guide rod assembly.
3. Push up the sear assembly where it protrudes from the rifle (just behind the bolt release) and pull it out the rear of the rifle.
4. Install the JARD Sear Assembly opposite of removal of the factory sear assembly.
5. With the rifle still unloaded and pointed in a safe direction, preform function and safety checks.

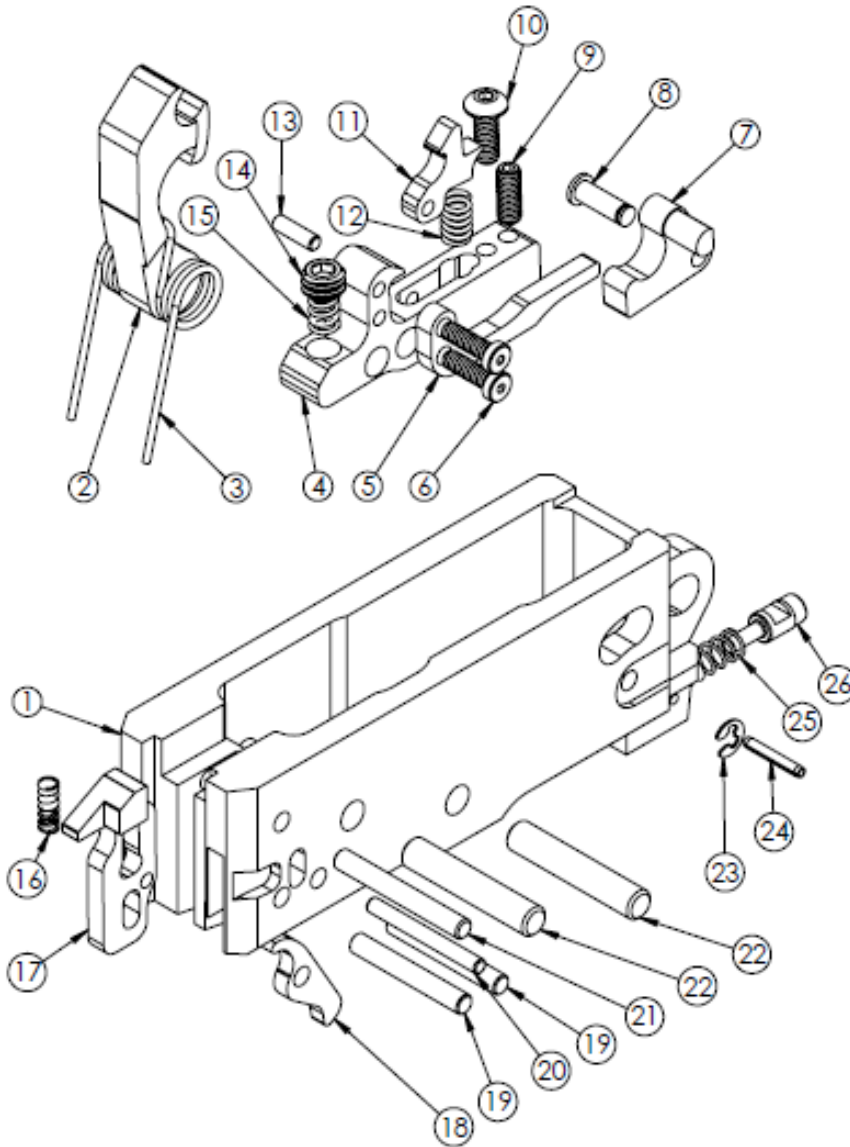
YOUR JARD SEAR ASSEMBLY COMES SET FROM THE FACTORY, NO ADJUSTMENT NEEDED. If you must make adjustments, follow these instructions carefully. Each step must be done in sequence. Only adjust the sear assembly if you understand the adjustment process. Adjustments done incorrectly can make your firearm unsafe!

1. Unload and clear the rifle, then remove the sear assembly to adjust it.
2. Place the hammer in the cocked position. Then with a 1/16" hex key, turn the sear engagement screw (9) clockwise until the sear releases the hammer. From this point, back the screw counter-clockwise approx. 1 full turn to reach a safe level of sear engagement. **SAFETY WARNING:** Insufficient sear engagement can result in hammer follow or loss of trigger function, causing double fires or a "runaway gun."
3. With the hammer again in the cocked position, turn the disconnect screw (10) with a 5/64" hex key counter-clockwise until when pushing the hammer down, you can feel it brush against the hook of the disconnect as much as possible without hooking. If the hammer remains retained by the disconnect, turn the screw clockwise until the hammer is no longer bound by the disconnect.
4. With the hammer forward (Hold the hammer down and guide it forward to prevent damage. Push the sear actuator (7) rearward to release the hammer.) the spring tension screw (14) can be adjusted with a 1/8" hex key. Turn clockwise to increase pull and counter-clockwise to decrease pull weight. If adjusted too tight or "heavy" the sear will not move, adjusted too loose or "light" the sear will not reset properly.

NOTE: If screws begin to turn too easily, apply thread locker to their threads to prevent deviation from adjustment. Allow 24 hours for thread locker to cure before use.

JARD Sear Assembly for Springfield Hellion®

Parts Breakdown List



ITEM NO.	PART NO.	DESCRIPTION	QTY.
1	5497	Housing	1
2	5498	Hammer	1
3	1610	Hammer Spring	1
4	4620	Sear	1
5	5499	Sear Arm	1
6	4099	Screw	2
7	5500	Sear Actuator	1
8	3804	Retaining Pin	1
9	1148	Sear Adj. Screw	1
10	1805	Screw	1
11	4191	Disconnect	1
12	1017	Disconnect Spring	1
13	1352	Dowel Pin	1
14	2868	Spring Tension Screw	1
15	1016	Sear Return Spring	1
16	1059	Spring	1
17	5501	Last Shot Hold	1
18	5502	Bolt Release	1
19	2752	Dowel Pin	2
20	1156	Dowel Pin	1
21	1504	Dowel Pin	1
22	3020	Dowel Pin	2
23	1254	E-Clip	1
24	3294	Roll Pin	1
25	1011	Detent Spring	1
26	5541	Plunger Detent	1

JARD, Inc.

3149 Nest Ave. – Sheldon, IA 51201

Phone: 712-324-7409 – Email: support@jardinc.com

www.jardinc.com