



Savage A17 / A22 Trigger System

Operators Instruction Manual



3149 Nest Ave. – Sheldon, IA 51201
Phone: 712-324-7409
Email: jardusa@live.com – www.jardinc.com

WARNING

This firearm is intended for use only by experienced competitive shooters and professionals. You must take responsibility for your own actions. We will not be responsible for any loss, injury, or death resulting from the use or misuse of this product.

The handling and use of firearm bears with a certain unavoidable risks, like sky diving and rock climbing. If you are not willing to accept responsibility for your own actions, guns are not for you.

The use of any custom parts or modifications may void any warranty from the manufacturer of your firearm.

JARD Savage A17 / A22 Trigger Assembly Installation / Adjustment Instructions

Installation

1. Remove the magazine and visually check the chamber before further handling of the rifle, to verify it is not loaded.
2. Remove the dust cover on the rear of the receiver. Use a small object to depress the retainer at the rear of the dust cover and pull up at the rear.
3. Remove the disassembly screw at the very rear of the receiver.
4. Remove the disassembly screw on the bottom of the rifle just ahead of the magazine well.
5. The stock can now be removed from the action.
6. Remove the guide rod / recoil spring assembly.
7. Remove the trigger retaining cross pin visible from the side of the action at the rear of the receiver.
8. The factory trigger assembly will now be able to be slid forward toward the muzzle and then pulled away from the receiver.
9. Install the JARD replacement Trigger System reverse of removal. (Note: The back of the trigger must be installed first at an angle.)

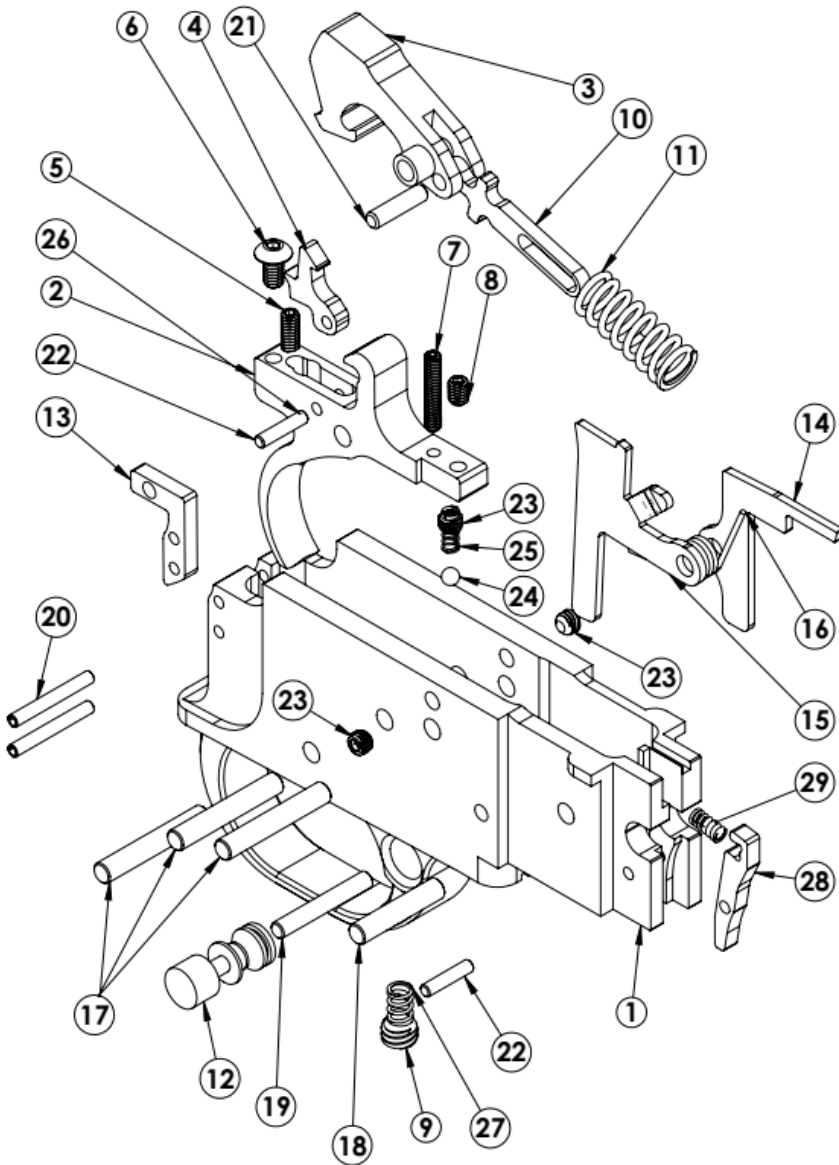
Trigger Adjustment

Read directions completely before beginning procedure.

Your JARD Trigger System comes adjusted from the factory and should be a replacement only procedure. However should the owner decide to modify the factory settings, below are some guidelines.

1. Remove the magazine and visually check the chamber to verify it is not loaded.
2. Disassemble the stock from the receiver and remove trigger assembly from receiver.
3. To adjust the sear engagement screw (5), with the hammer (3) cocked and the safety off, turn the screw clockwise slowly until the hammer is released. From the point where the sear releases the hammer, turn the screw counterclockwise until there is sufficient sear engagement to function safely and properly. (Approximately ½ turn).
4. Adjust the disconnect screw (6) so the hammer (3) brushes against the disconnect (4) as much as possible without hooking. To do this, put the hammer in the cocked position, and push down on the hammer. If the hammer does not touch the disconnect, turn the disconnect screw counter clockwise until contact is made. If the hammer sticks down, the disconnect screw must be tuned clockwise until the hammer is released.
5. To adjust the over travel (8), the hammer pivot pin (17 – Hammer Pivot) must be driven out. Move the hammer forward toward the front of the trigger housing so it is out of the way. Turn the screw clockwise to decrease over travel and counter-clockwise to increase over travel. If the over travel screw is adjusted too far down, the hammer will not release from the trigger when it is pulled.
6. To set the safety screw (7), the hammer pivot pin (17 – Hammer Pivot) must be driven out. Move the hammer forward toward the front of the trigger housing so it is out of the way. Place safety in the safe position. Turn the screw clockwise until it contacts the safety then back it off until the safety moves freely. If the safety is set too loose, the trigger will fire on safe, and if it is set too tight the safety may not move easily or not able to engage.
7. To adjust the pull weight, the spring tension screw (9) may be turned in (clockwise) to increase the pull weight or turned out (counterclockwise) to decrease pull weight.
8. If the trigger housing is excessively loose in the receiver, the side screws (23) may be adjusted out to limit movement.
9. If any of the adjusting screws move freely with no resistance, it will be necessary to remove the screw and apply blue thread locker to the threads to prevent settings from coming out of adjustment.
10. Perform all safety and function checks.
11. Reinstall all components.

JARD Savage A17/A22 Assembly Parts Breakdown List



ITEM NO.	PART NO.	DESCRIPTION	QTY.
1	4371	Trigger Housing	1
2	4372	Trigger	1
3	4373	Hammer	1
4	1167	Disconnect	1
5	1475	Sear Screw	1
6	1524	Disconnect Adj. Screw	1
7	3084	Safety Screw	1
8	1124	Overtravel Screw	1
9	2868	Spring Tension Screw	1
10	4212	Hammer Strut	1
11	4545	Hammer Spring	1
12	1162	Safety	1
13	4375	Trigger Housing Mount	1
14	4374 4585	Ejector 22WMR / 17HMR 22LR	1
15	4376	Bolt Hold	1
16	4370	Spring	1
17	1171	Dowel Pin	3
18	1168	Dowel Pin	1
19	2752	Dowel Pin	1
20	2517	Roll Pin	2
21	1505	Dowel Pin	1
22	3069	Dowel Pin	2
23	2952	Screw	3
24	1163	.125 Ball	1
25	1058	Safety Spring	1
26	1016	Spring	1
27	1011 1012 1013 1014 1016	Trigger Spring 1# 1-1/2# 2# 2-1/2# 3#	1
28	4652	Magazine Pressure Plate	1
29	4486	Spring	1

JARD, Inc.

3149 Nest Ave. – Sheldon, IA 51201

Phone: 712-324-7409 – Email: jardusa@live.com

www.jardinc.com