



Savage Axis

Operators Instruction Manual



3149 Nest Ave. – Sheldon, IA 51201
Phone: 712-324-7409
Email: jardusa@live.com – www.jardinc.com

WARNING

This firearm is intended for use only by experienced competitive shooters and professionals. You must take responsibility for your own actions. We will not be responsible for any loss, injury, or death resulting from the use or misuse of this product.

The handling and use of firearm bears with a certain unavoidable risks, like sky diving and rock climbing. If you are not willing to accept responsibility for your own actions, guns are not for you.

The use of any custom parts or modifications may void any warranty from the manufacturer of your firearm.

Returns will not be accepted on any parts that have been modified.

If you do not have a thorough understanding of the Savage Axis Trigger Assembly and the purpose and function of all the parts, do not attempt to install this system. Have it installed by an experienced gunsmith.

JARD Savage Axis Replacement Trigger

Installation

1. Verify the gun is unloaded and remove the stock from the receiver.
2. Remove the mounting pin attaching the trigger housing to the receiver (front pin)
3. Remove factory trigger assembly and install the JARD trigger assembly.
4. Install factory mounting pin and stock.

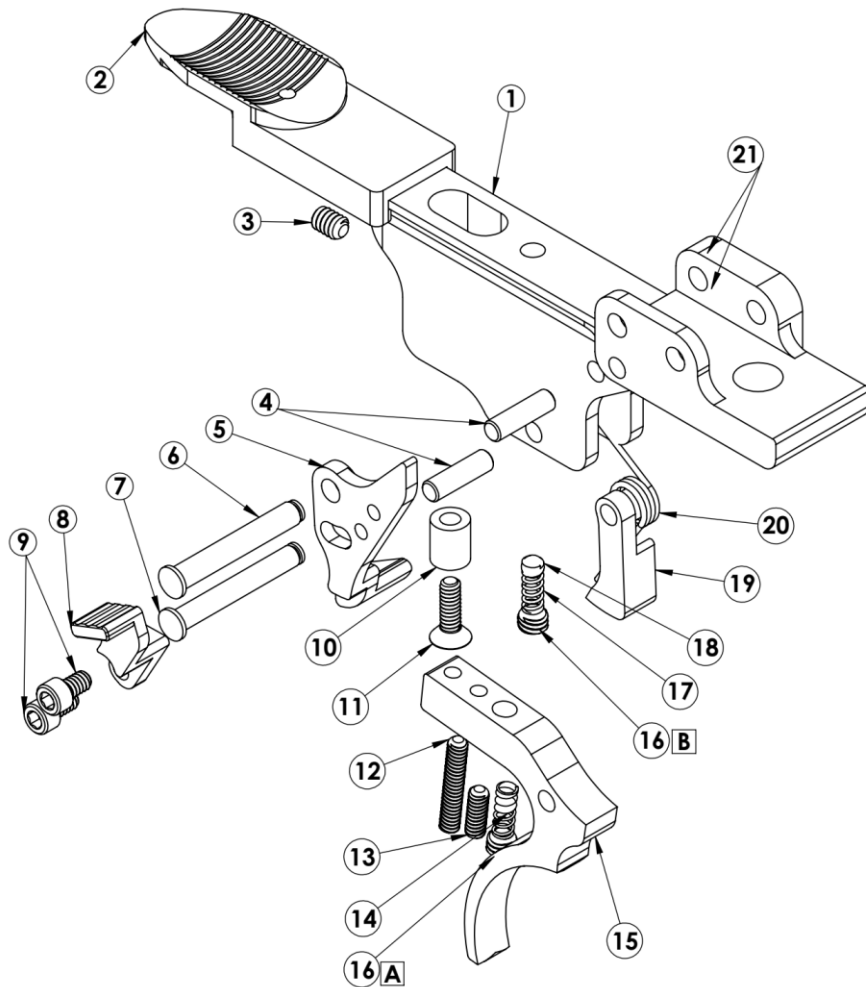
Trigger Adjustment

Read directions completely before beginning procedure.

Your JARD trigger system comes adjusted from the factory and should be a replacement only procedure. However should decide to modify the factory settings, below are some guidelines.

1. Verify the gun is unloaded and remove the stock from the receiver.
2. To adjust the sear engagement screw (3), turn the screw counterclockwise several turns and close the bolt leaving the action cocked. Turn the safety selector to the fire position. Slowly turn the screw clockwise until the sear is released. Turn the screw slightly back counterclockwise until safe sear engagement is achieved (approx. ¼ turn) (Note: There must be sufficient sear engagement to allow reliable safety function.)
3. Check functioning of the trigger by slamming the bolt (closing it sharply) several times. If the sear is not released when closing sharply, it may be possible to adjust for less sear engagement. However, if the sear is released, more sear engagement and/or pull weight increase is needed.
4. Once the sear engagement has been successfully set, the safety can be adjusted. With the action cocked, turn the safety selector to the safe position. If the safety cannot be engaged, the safety screw (12) must be turned counterclockwise to allow the safety to move back. Once the safety is on the on position, turn the safety screw clockwise until it engages the safety. With the safety on and the action cocked, there should be no movement in the trigger and the selector should move back and forth freely.
5. To adjust the overtravel, uncock the action so the stricker is forward. Turn the overtravel screw (13) clockwise until the screw stops. Next, pull the bolt back but do not close it. Turn the screw counterclockwise until the trigger resets. The overtravel screw may need to be adjusted further counterclockwise to prevent binding or potential non resets.
6. The final adjustment can be made to fine tune your trigger pull. The spring tension screw (16A) can be turned in or out to increase or decrease trigger pull.
7. Install the receiver into the stock and perform function and safety checks.

Savage Axis Assembly Parts Breakdown List



ITEM NO.	PART NUMBER	DESCRIPTION	QTY.
1	4678	Trigger Housing	1
2	4679	Safety	1
3	4690	Sear Adjust Screw	1
4	2152	Dowel Pin	2
5	4559	Sear	1
6	4682	Retaining Pin, Savage	1
7	3352	Retaining Pin	1
8	4681	Bolt Release	1
9	3433	Screw	2
10	4680	Safety Bushing	1
11	2326	Screw	1
12	3084	Safety Screw	1
13	2970	Overtravel Adj. Screw	1
14	1616 1058 1059 1060	Trigger Pull Spring 11 oz 14 oz 16 oz 20 oz	1
15	4557	Trigger	1
16	2952	(A) - Pull Spring Adj. (B) - Safety Spring Adj.	2
17	1060	Spring	1
18	1163	.125 Ball	1
19	4558	Lever	1
20	1597	Sear Spring	1
21	1254	E-Clip	2

Jard, Inc.

3149 Nest Ave. – Sheldon, IA 51201

Phone: 712-324-7409 – Email: jardusa@live.com

www.jardinc.com